

NEWS

from the Worcester Art Museum

55 Salisbury Street, Worcester, MA 01609-3196
Telephone 508.799.4406, Fax 508.798.5646

IMMEDIATE RELEASE

MEDIA CONTACT: Allison Berkeley
Manager of Marketing and Public Relations
allisonberkeley@worchesterart.org
508.799.4406 x3073

See attached list for participating
floral designers from your area!

**BREATHE IN A BIT OF SPRING DURING FLORA IN WINTER
AT THE WORCESTER ART MUSEUM
JANUARY 24-27**

(WORCESTER, Mass., January 11, 2008) – The Worcester Art Museum comes alive for our 6th Annual **Flora in Winter** celebration. The Museum and Tower Hill Botanic Garden collaborate to host *Flora in Winter*, the premier floral design event of the year. Skilled artisans from across New England create clever, provocative interpretations at both venues. It is a succulent feast for the eyes and spirit in the middle of winter.

At the Worcester Art Museum, Homer's *The Gale*, Sheeler's *Architectural Planes*, Ryder's *Pegasus*, Benson's *Natalie*, as well as a myriad of other artworks from all over the world will be ingeniously interpreted with fresh, stunning and imaginative flower arrangements. At Tower Hill Botanic Garden, view dramatic, colorful floral arrangements interpreting the timeless, mysterious beauty of Chinese culture during a *Passport to China*.

Guided tours at each location will be offered several times daily. Special events celebrating **Flora in Winter** will be held at each institution.

Worcester Art Museum's presentation of **Flora in Winter** is generously sponsored by Unum and Flagship Bank and Trust. Additional generous support provided by the *Worcester Telegram & Gazette* and WICN Public Radio 90.5 FM, New England's Jazz and Folk Station.

For information on *Flora in Winter* events at the Worcester Art Museum, please call 508.799.4406, x3025 or visit www.worcesterart.org. Members of the Press please call x3073. For information on events at Tower Hill Botanic Garden, please call Alix at 508.869.6111, x146 or visit www.towerhillbg.org.

FLORA IN WINTER PROGRAMMING AT THE WORCESTER ART MUSEUM

Admission

Admission is \$10 for adults, \$8 for seniors and full-time college students with current ID, and FREE for Members and all youth 17 and under. Additional fee for certain related events.

Hours

Thursday, January 24: 11am-5pm

Museum reopens from 6-8:30pm for *Flora Euphoria*

Friday, January 25: 11am-5pm

Saturday, January 26: 10am-5pm*

Sunday, January 27: 11am-5pm

*There will be no free admission at the Worcester Art Museum Saturday morning, January 26, except for Museum Members. Free Saturday mornings from 10am–noon will resume following *Flora in Winter*.

Tours

Public drop in Tours will be offered at the Museum and are free with general admission, no RSVP required.

Please meet in Salisbury Hall. Tours are as follows:

Friday, January 25: 12:30, 1, 1:30, 2pm

Saturday, January 26: 11, 11:30am, 1, 1:30, 2, 2:30, 3pm

Sunday, January 27: 12:30, 1, 1:30, 2pm

For private tours of groups of 10 or more, please call 508.799.4406, x3130.

The Museum Café Hours

Thursday-Sunday: 11am–3pm

No reservations required. For groups larger than 14, please contact Special Events at x3077.

The Museum Shop Hours

Open throughout *Flora in Winter*. The Museum Shop is well stocked with Flora-inspired jewelry, house wares, paper products and more!

Parking

FREE parking is available in the three Museum lots: Salisbury St., Lancaster St. (across from Lancaster St. entrance at the corner of Lancaster St. and Institute Rd.), and Tuckerman St. If these lots are not available, please park in the Municipal lot at the corner of Highland and Lancaster Streets for a nominal fee. During the weekend of *Flora*, there will be limited parking available in the Trinity Lutheran Church parking lot. Please help us be good neighbors and respect posted parking regulations in this lot!

EVENTS

Flora Euphoria

Thursday, January 24, 6-8:30pm

Renaissance Court/Galleries

No RSVP required.

\$10 WAM or THBG Members; \$20 for nonmembers

Join us at the Museum Thursday night and enjoy the flowers at their freshest. Breathe in the aroma of spring, wander the galleries, visit with friends, or just be inspired! Music, *hors d'oeuvres* and a cash bar add to the evening's festivities.

Demonstration: Interpretive Challenge Class

Friday, January 25, 3-5pm

Renaissance Court

No RSVP required. Free with Museum admission.

Watch and learn as a select group of arrangers craft beautiful floral designs inspired by the *Wall at WAM: Alexander Ross*. The finished arrangements will be on view to enjoy for the duration of *Flora*.

Demonstration and Boxed Lunch: Current Trends in Flower Arranging

Saturday, January 26, 12-2pm

Conference Room, Higgins Education Wing

\$18 WAM or THBG Members; \$28 nonmembers (includes Museum admission).

RSVP required. For reservations call 508.799.4406 x3025.

Instructor/Arranger Donna McDonald reveals great ideas used by professionals and flower enthusiasts alike to create contemporary floral masterpieces.

Flora: "Beyond the Seen"

Sunday, January 27, 11am-4pm

Discovery Gallery

Free with Museum admission.

Worcester Art Museum and Audio Journal are joining forces to make the popular *Flora in Winter* arrangements accessible to people with visual impairments. Braille and large print programs, a recorded audio tour, as well as a tactile table with live flowers, greens, and other floral materials will be available. All are welcome!

Instrumental Music

Sunday, January 27, 12-2pm

Selected Public Spaces.

Enjoy the musical ambiance as you stroll through the Museum.

Afternoon Tea and Tour of An American Vision: Treasures from the Winterthur Museum

Sunday, January 27

2:30pm seating, followed by a 3:15-4pm tour

3:30pm seating, followed by a 4:15-5pm tour

McDonough Court

\$35 WAM or THBG Members; \$50 nonmembers (includes Museum admission).

RSVP required. For reservations call 508.799.4406 x3025.

Enjoy a classic English afternoon tea featuring teas graciously donated by the Upton Tea Company, sweets and savories followed by a guided 45 minute tour of the spectacular exhibition, *An American Vision: Treasures from the Winterthur Museum*. Come early to visit the *Flora in Winter* exhibition. Special thanks to Margaret Hunter for her generous support.

About the Worcester Art Museum

The Worcester Art Museum, which opened to the public in 1898, is world-renowned for its 35,000-piece collection of paintings, sculpture, decorative arts, photography, prints, drawings and new media. The works span 5,000 years of art and culture. View paintings by Cassatt, Gauguin, Goya, Monet, Sargent and Whistler; admire floor mosaics from the ancient city of Antioch; see cutting-edge contemporary art; and discover the Museum's many other treasures. Special exhibitions showcase the masterworks, seldom-seen gems, and important works on loan. Enjoy a delectable lunch in the Museum Café, and browse the Shop for unique gifts and mementos.

Dedicated to the promotion of art and art education, the Museum offers a year-round studio art and art appreciation program that enrolls over 7,000 adult and youth students each year. Public tours are offered Saturdays at 11 a.m. and Sundays at 1 p.m., September through May. Audio tours are also available in English and Spanish.

Museum hours are Wednesday through Sunday, 11am-5pm, Third Thursdays of every month, 11am-8pm, and Saturday, 10am-5pm.. Admission is \$10 for adults, \$8 for seniors and full-time college students with current ID, and FREE for Members and all youth 17 and under. Admission is also FREE for everyone on Saturday mornings, 10am-noon (sponsored by Fidelity Investments, The TJX Companies, Inc. and National Grid).

The Museum is located at 55 Salisbury St., Worcester, Mass., easily accessible from the Massachusetts Turnpike (I-90), Route 290 and Route 9. Free parking is available near entrances on Salisbury, Lancaster and Tuckerman streets. For more information, call (508) 799-4406 or visit the Museum web site at www.worcesterart.org.

Electronic images available.

Editors: Find this release online at <http://www.worcesterart.org/Information/press.html>

#

GARDEN CLUB AND FLORAL DESIGNERS IN THE GALLERIES
Organized by Hometown, Garden Club, Professional Arranger, Artwork Interpreted

Acton, Acton Garden Club, Thelma H. Shoneman, *A Still Life on a Table*, Gerrit Heda

Ashburnham, Laurelwood Garden Club, Elizabeth McLaughlin, *Colossal Female Head*, Cyprus

Centerville, Worcester Garden Club, Osterville Garden Club, Susan B. Dewey, *The Vision of Saint Jerome*, Follower of Caravaggio

Dudley, Independent, Nancy Roberts, *Still Life*, Joris van Son

Holden, Independent, Ken Bositis, *Sampson Vrying Stoddard Wilder*, John Vanderlyn

Hopkinton, Hopkinton Garden Club, Julie Day, Deborah Coleman, Ruth Gorman, *Saint John the Baptist*, Defendente Ferrari

Milford, Greenleaf Garden Club, Michele Creamer, Sandra Tosches, *Lake Avernus*, Richard Wilson

North Grafton, Independent, Beverly McClure, *The Gale*, Winslow Homer

Princeton, Worcester Garden Club, Robin Whitney, *Pegasus*, Albert Pinkham Ryder

Sherborn, Sherborn Garden Club, Ellen Patterso, Holly Shuman, *Portrait of a Woman*, Flemish

Shrewsbury, Shrewsbury Garden Club, Joan Moreschi, *Virgin and Child*, French

Stow, Stow Garden Club, Elizabeth Call, *Architectural Planes*, Charles Sheeler

West Boylston, Worcester Garden Club, Katharine Michie, *Woman's Wedding Tunic*, Sindh Province (Pakistan)

Westborough, Independent, Virginia Orlando, *Snake*, Roman

Worcester, Worcester Garden Club, Kim Cutler, *Untitled Painting*, Vasily Kandinsky

Worcester, Independent, Andrea N. Driscoll, *Natalie*, Frank W. Benson

Worcester, Worcester Garden Club, Mary Fletcher, *Corn and Winter Wheat*, Thomas Hart Benton

Worcester, Worcester Garden Club, Ulrike Lies, Arlene Sjosten, *Metate*, Costa Rica

Worcester, Worcester Garden Club, Sarah Pettit, *The Virgin*, French

Worcester, Independent, Cathy Walsh, *Standing Bodhisattva*, Chinese Song Dynasty

Worcester, Independent, Kae Collins, *Prince Arikankharer Slaying His Enemies*, Meroitic

Worcester, Independent, Sally E. Jablonski, *The Holy Family and Saints*, Niccolo di Bartolomeo Pisano

Flora '08

IN WINTER

JANUARY 24 - 27



Kae Collins, Independent, interprets *Portrait of a Young Noblewoman*, Unknown artist of the School of Madrid



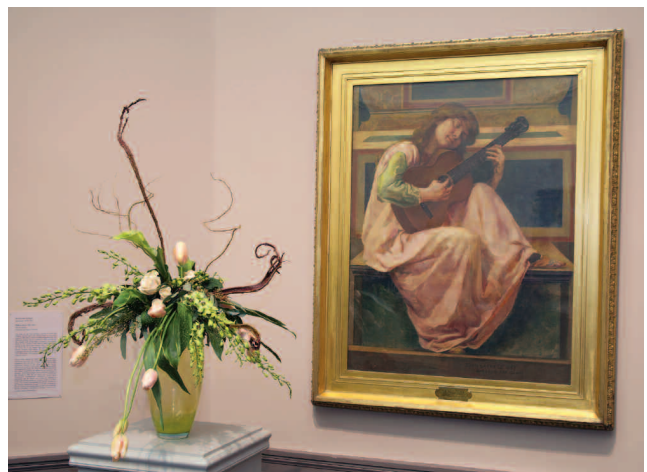
Katherine Michie, Worcester Garden Club, interprets Lovis Corinth's *At the Mirror*



Mary A. Lord, Dublin, N.H. Garden Club and Weston Garden Club, interprets *Portrait of a Lady, Roman*



Susan B. Dewey, Worcester Garden Club and Osterville Garden Club, interprets Joseph Wright of Derby's *Portrait of Sarah and Ann Haden*



Sally E. Jablonski, Independent, interprets John Lafarge's *Suonatore*

Samples of interpretations from *Flora in Winter 2007*.

For available images, contact Allison Berkeley at 508.799.4406, x3073, or allisonberkeley@worchesterart.org.

WORCESTER ART MUSEUM *where art celebrates life* | 55 Salisbury Street | Worcester, MA 01609 | 508.799.4406
Wednesday - Sunday 11-5; 3rd Thursdays until 8; Saturday 10-5 | Classes | Library | Café | Shop | www.worcesterart.org